

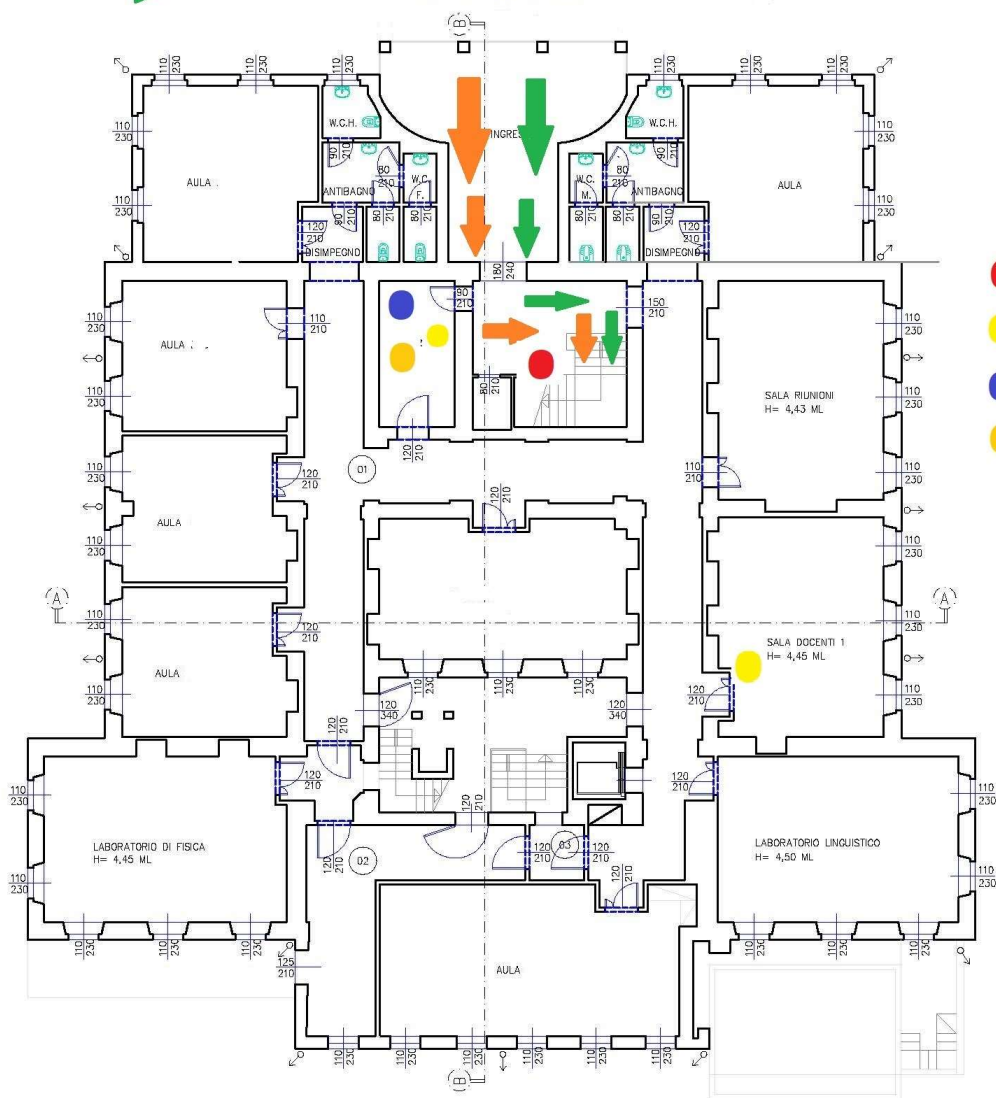






# Plesso liceo - piano terra

Commissione aula 18 

Commissione aula 31 

INGRESSO



-  Rosso - Totem dispenser gel igienizzante
-  Giallo - Dispenser murale gel igienizzante
-  Blu - Punto informativo prevenzione e sicurezza
-  Arancione - Consegna dichiarazioni commissari e candidati e accompagnatori